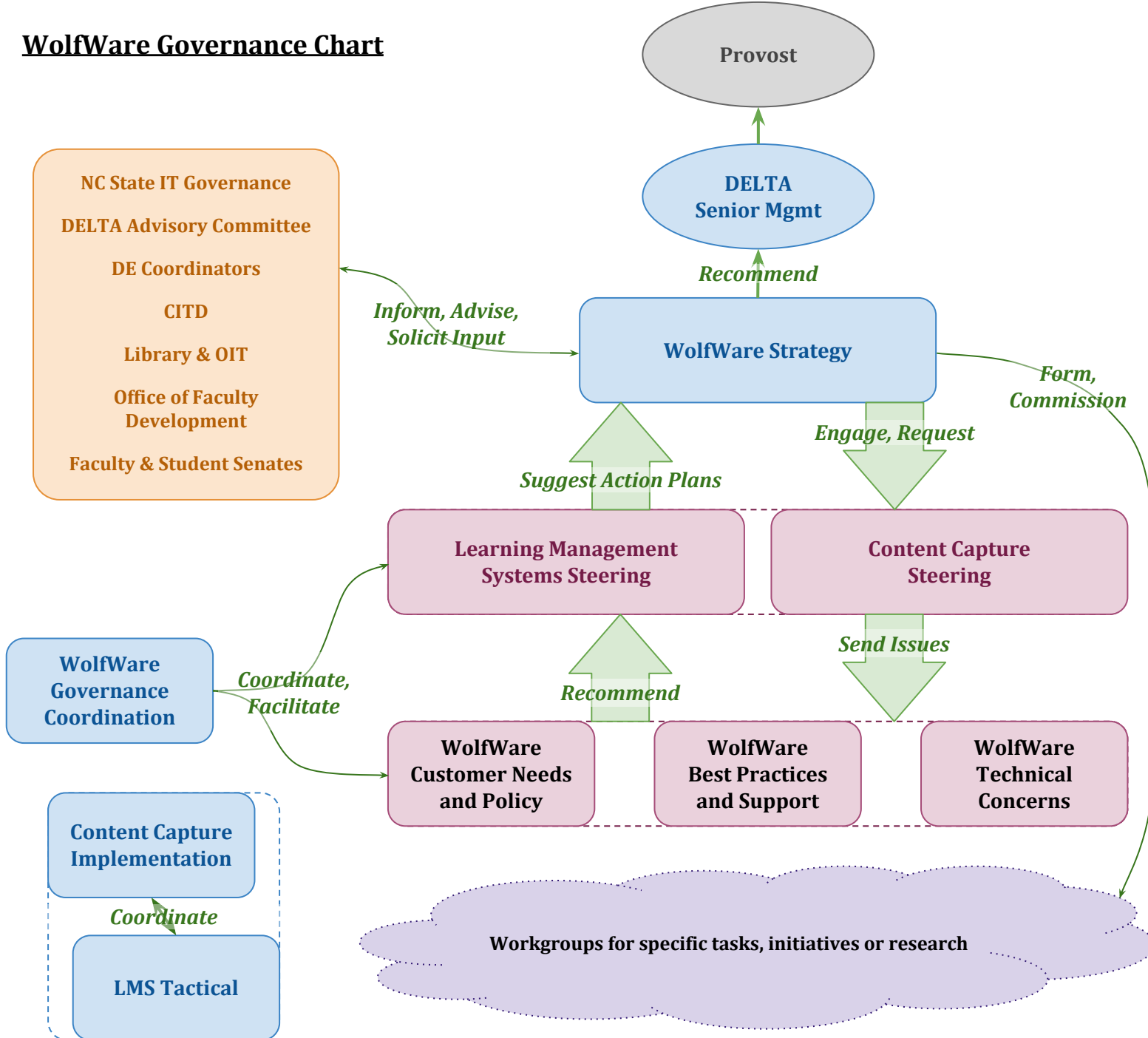


# WolfWare Governance Chart



DELTA facilitates a visible and inclusive governance structure and is responsible for the provision and maintenance of enterprise learning technologies for NC State University.

The WolfWare steering committees and subcommittees formally provide recommendations and advice to DELTA management related to enterprise learning technology decisions and plans..

These groups and DELTA also seek input from and coordinate with NC State IT governance, campus communities of practice, partner organizations and stakeholders across the university.